

# E-WASTE INCENTIVE SCHEME

## € 125 per metric ton on top of the metal value

### Have you already signed up for this new scheme?

Since the beginning of 2022, a scheme has been available for metal recyclers to encourage the proper disposal of Waste Electrical and Electronic Equipment, also known as e-waste. These type of appliances run on a plug or battery. The metal recyclers who participate in the scheme receive from the OPEN Foundation a compensation of € 125 per metric ton of e-waste that is collected and delivered separated to participating CENELEC-certified processors. The OPEN Foundation is responsible for collecting and recycling e-waste in the Netherlands on behalf of all electrical appliance makers. We have listed the 9 most frequently asked questions and answers for you! Want to join now? Signing up is quick and easy.

#### 1. Why this Incentive Scheme?

Proper processing of e-waste is highly beneficial to a sustainable and circular society. This goal can only be achieved if metal recyclers deliver the collected e-waste for processing to electronics processors with a CENELEC certificate. The metal recyclers' cooperation is therefore crucial, which is why this e-waste Incentive Scheme was set up. This scheme provides a financial reward to collectors for every metric ton of e-waste properly delivered to a processor.

#### 2. How does the scheme work in practice?

##### The Basics

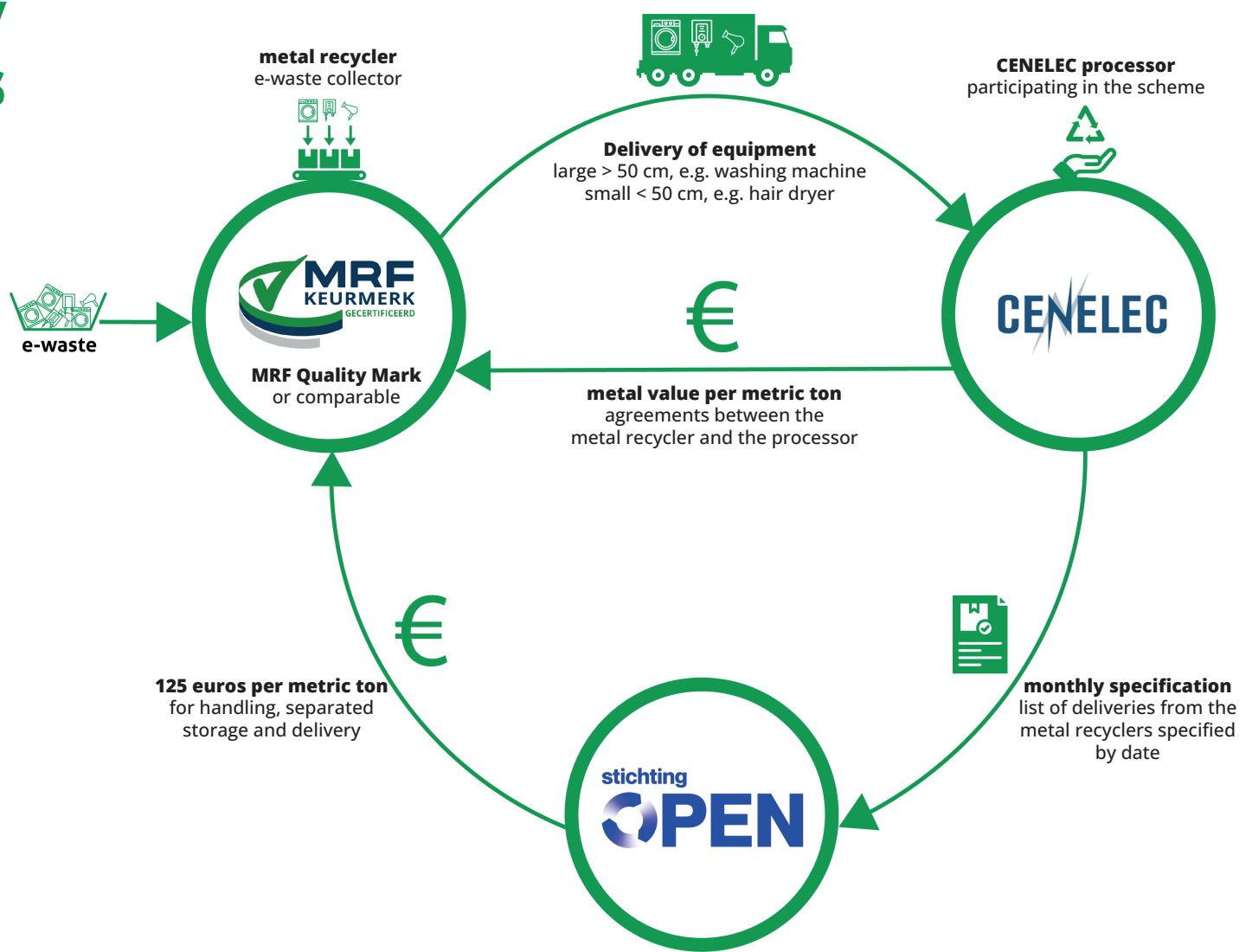
- Metal recyclers can participate if they are licensed to collect e-waste and if they meet the requirements of the MRF Quality Mark or a comparable endorsement.
- These companies can sign up with the OPEN Foundation and sign a contract with the OPEN Foundation.

##### Delivery and payments

- The metal recyclers who collect the e-waste must keep it separate and deliver the material to the CENELEC processor participating in the scheme. These are listed on the OPEN website.
- The processor reports the received weight of e-waste to the OPEN Foundation.
- The OPEN Foundation pays € 125 per metric ton to the metal recycler who delivered the material.

#### 3. Who can participate in the scheme?

Metal recyclers who are members of the MRF and who are allowed to collect e-waste according to their permit. Companies that are not members of the MRF may also participate, however, in that case they must be able to demonstrate that they meet the requirements of the MRF Quality Mark ([www.mrf.nl/keurmerk](http://www.mrf.nl/keurmerk)). For this purpose, you can contact one of the certifying organisations listed on the MRF site, which will check whether your company meets the requirements. You can then immediately start delivering e-waste to any of the participating CENELEC processors. After a successful audit by the certifying organisation, you will receive a retrospective payment of the fee. The participating certification organisations are published on the MRF website, where you will also find information on the MRF Quality Mark. Alternatively, ISO9001 and ISO14001 are allowed provided that the provisions of chapter 4.6 of the MRF Quality Mark (WEEE) are included in the scope. Another alternative is the NEN standard NVN-CLC/TS 50625-4.



#### 4. Are you not licensed to collect e-waste and you still want to benefit from the incentive scheme?

Metal recyclers who are not licensed to deliver e-waste sometimes find e-waste among the scrap they receive. They may still qualify for the Incentive Scheme, which is subject to the condition that the e-waste must be kept separated undamaged.

#### 5. What types of e-waste are covered by this scheme?

This scheme covers large equipment (larger than 50 cm, such as a washing machine, dishwasher, dryer, central heating boiler, large fan and boiler) and small equipment (equal to or smaller than 50 cm, such as a Hoover, microwave oven, hair dryer, cooling appliance and electric kettle). Please note: refrigerators/freezers, solar panels, televisions, lamps and ICT equipment are not included in the scheme. The complete list can be found on the website of the OPEN Foundation.

#### 6. Is there a connection between this scheme and the increasing number of fires caused by lithium-ion batteries?

Increasingly more electrical appliances contain lithium-ion batteries and it is therefore vital to keep these appliances out of the other scrap streams because of the fire risk involved. The sooner these devices are kept separated and stay undamaged, the lower the risk of a fire.

#### 7. Are delivered appliances that are slightly damaged acceptable?

A small dent is not a problem. The essential components must not have been removed from the device and hazardous substances must be able to be depolluted. This is not possible if devices have been crushed and/or pulverised.

#### 8. Where can you find information?

If you still have questions after reading these questions and answers, please contact Marijn van der Maesen (telephone: 06 509 601 26), who deals with communication matters regarding the scheme on behalf of the OPEN Foundation and in consultation with the MRF. Or send your question to Marijn at [info@stichting-open.org](mailto:info@stichting-open.org). Alternatively, you can send an e-mail to the MRF: [mail@mrf.nl](mailto:mail@mrf.nl).



Marijn van der Maesen

#### 9. How does signing up and invoicing work?

Please sign up at [info@stichting-open.org](mailto:info@stichting-open.org) to enable us to organise the registration with you. In a few simple steps, you can then view and sign the contract for this scheme. Once this is completed, you can start delivering e-waste to the participating processors. You will receive a monthly invoice proposal from the OPEN Foundation. If you agree, you can send an invoice to the OPEN Foundation and the compensation will be automatically transferred to your bank account.